



**Stellar Disk Wipe**

**User Guide**



**Stellar**  
Information Systems Ltd.



**Stellar Disk Wipe**

Version 1.0

**User Guide**



### Stellar Disk Wipe at a Glance

Stellar Disk Wipe is an ideal solution for permanent and complete removal of data from hard disk in one go. Once data has been removed using Stellar Disk Wipe it is beyond recovery.

#### Why use Stellar Disk Wipe?

In today's world, important and confidential information are stored in digital form and theft of these information is a major threat. At times, unknowingly we may provide our sensitive data such as financial records, passwords and other private details to others. Formatting or deletion of data from hard disk does not remove the contents permanently – it only deletes the details regarding the file's location. For achieving complete and permanent erasure of data from your hard disk, you need to wipe data using secure wiping methods. Powerful data destruction software which uses efficient wipe algorithms with maximum overwrite speed can only be the solution for that.

This is precisely where a powerful and reliable tool like Stellar Disk Wipe comes handy. The user-friendly software uses efficient and secure wipe methods with maximum overwrite speed to wipe your entire hard disk. The erasure wizard will guide you through simple steps to sanitize your hard disk within minutes. Once data is wiped, no data can be recovered. Eventually, Stellar Disk Wipe protects your confidential data from any possible misuse.

#### Key Features of Stellar Disk Wipe:

- Easy-to-use wizard driven interface
- Complete erasure of hard disk in one go.



### Using the Software

To permanently erase data from a disk, you just need to put the CD in your system's CD ROM drive and boot the computer from the CD. After booting Stellar Disk Wipe wizard is displayed on the screen. Stellar Disk Wipe wizard will help you to erase your entire hard drive in 4 simple steps:

#### Step 1: Wizard Intro

Brief description about Stellar Disk Wipe is given in the introductory page of the wizard. Please review the information carefully and then click **Next** to proceed.

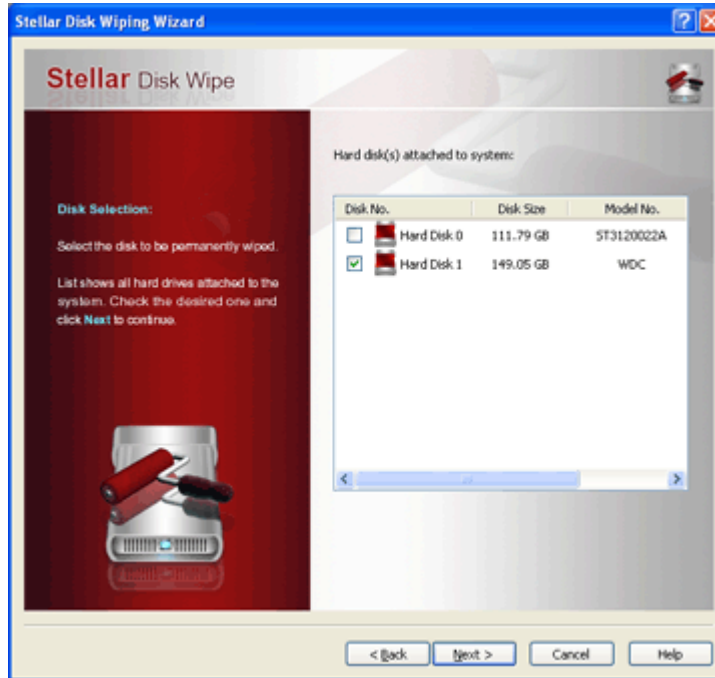




### Step 2: Disk Selection

In this phase, the wizard will show all hard drives attached to the system along with its details such as Disk No., Disk Size, Model No. and Serial No. Hard disk(s) appears in the list according to the boot sequence configured in the BIOS.

Check the disk to be wiped and click **Next** to continue.





### Step 3: Choose Wipe Method

This phase of the wizard will provide you different wiping methods. The algorithms are arranged in such a way that the fastest one with maximum overwrite speed is on the top of the list and the algorithm with maximum number of passes towards the end.

Algorithms used by the software are:

1. Zeros (1 pass)
2. Pseudo Random ( 1 pass)
3. Pseudo Random & Zeros ( 2 passes)
4. DoD 5220.22 - M ( 3 passes)
5. DoD 5200.28 Std ( 7 passes)
6. Russian Standard - GOST ( 7 passes)
7. B. Schneier's Algorithm ( 7 passes)
8. German Standard, VSITR ( 7 passes)
9. Peter Gutmann ( 35 passes)
10. US Army AR 380-19
11. NATO Standard ( 5 passes)
12. US Air Force AFSSI 5020

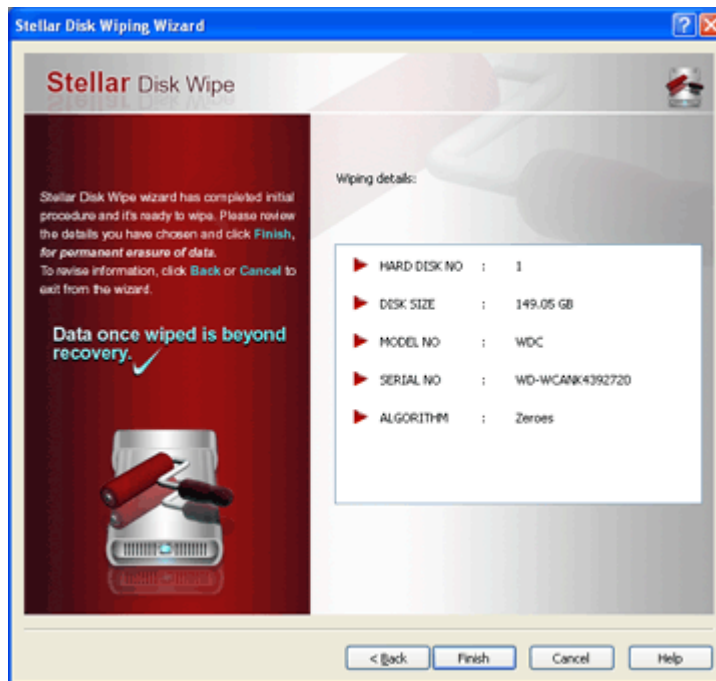
Select the algorithm and click **Next** to continue.





### Step 4: Start Wipe

The final phase of the wizard will give the summary of what you have chosen. It will show the selected disk and wiping method. Review the summary carefully and click *Finish* to continue. In case of any changes, you have an option to click *Back* and revise as required. Click *Cancel*, if you want to exit from the wizard.



As soon as you click **Finish**, confirmation message pops up. If you are sure to continue then click **Yes** to start wiping. When the process is complete, you get a message indicating that Stellar Disk Wipe has successfully wiped the selected hard disk.

